

# **5 Year Facility Planning Outlook**

### Your District

- 9 Facilities

- Summit MS
- Summit HS
- Brayton ES
- Franklin ES
- Jefferson ES
- Lincoln-Hubbard ES
- Washington ES
- Wilson PC
- Jefferson PC



### Infrastructure Needs Summary: (Developed in a 6 week period from August 28 – Oct 6, 2008)

School	Boilers/Mech. Improvements	Roof Replacement	Site Work	Window Replacement	Miscellaneous	Budget Per School Priority		
High School	Boiler and Partial Steam to HW \$798,000				Ventilation Improvements TBD	\$0	\$0	\$0
Middle School	Boiler and Partial Steam to HW \$811,000		Sidewalk Replacement TBD		Ventilation Improvements TBD	\$290,000	\$0	\$0
Brayton ES						\$700,000	\$0	\$0
Franklin ES		Roof Repairs TBD	Sidewalk Replacement TBD		Library Renovation,	\$1,542,000	\$0	\$0
Jefferson ES			Ramp Replacement TBD			\$165,000	\$0	\$0
Lincoln ES			Drainage/Waterproofing/Sidewalks TBD			\$410,000	\$0	\$0
Washington ES			Sidewalk Replacement TBD			\$0	\$0	\$0
Wilson PC								
Jefferson PC								
Total Budget Per Work Scope	\$7,679,000	\$1,565,000	\$0	\$0	\$0	\$3,107,000	\$0	\$0

- Costs include 25% soft costs for contingencies, design, construction management, bonding and legal fees, testing and surveys.
- Costs do not include removal of hazardous materials.
- Costs do not include 3% escalation per year for construction beginning after 2009.

## Summit Public Schools – Mechanical System Upgrades

*Original, aged, inefficient systems*



*New, efficient, modular systems*





### *Elementary Schools Facilities Assessment*

- Brayton ES



- Franklin ES



- Jefferson ES



- Lincoln-Hubbard ES



- Washington ES



***Lawton C. Johnson  
Summit Middle School  
Facilities Assessment***



***Summit High School  
Facilities Assessment***





## **High School Assessment Process**

- **Two-Pronged Approach: Physical Condition and Program**
  - **Physical Condition:**      **Investigations by EI team of Architects and Engineers**
    - Meetings with Director of Facilities, Central Office Staff and Building Administrators
  - **Educational Program:**      **EI Program Specialist**
    - Meetings with District Administration, School Administration and High School Program Assessment Committee
- **Assessment Categories:**
  - **Category 1 -      Site Work**
  - **Category 2 -      Building Envelope**
  - **Category 3 -      Building Interior**
  - **Category 4 -      Mechanical Systems**
  - **Category 5 -      Electrical Systems**
  - **Category 6 -      Fire Protection Systems**
  - **Category 7 -      Educational Adequacy**



## **High School Facility Assessment Goals**

- Identify additional needs to building systems and components, playing fields and parking lots
- Examine Educational Adequacy of the High School facility in regard to current and future program goals and meeting the needs of the 21<sup>st</sup> Century educational experiences
- Prioritize plans to meet identified needs
- Provide information that will assist the District in updating the District 5 year Long Range Facility Plan
- Provide for a comprehensive, strategic plan to provide for the future educational needs of students in grades 9-12

Priority Matrix								
School	Sitework Upgrades	Building Envelope Upgrades	Interior Upgrades	Mechanical System Upgrades	Electrical System Upgrades	Fire Sprinkler System Upgrades	Educational Adequacy Upgrades	Priority Subtotals
<i>Summit High School</i>								
<i>Priority 1 Deficiencies</i>	\$380,000	\$190,000	\$250,000		\$320,000	\$200,000	TBD	\$1,340,000
<i>Priority 2 Deficiencies</i>	\$1,090,000	\$5,000,000	\$20,000	\$700,000			TBD	\$6,810,000
<i>Priority 3 Deficiencies</i>							TBD	
<i>Deficiency Subtotals</i>	\$1,470,000	\$5,190,000	\$270,000	\$700,000	\$320,000	\$200,000	TBD	
<i>Grand Total</i>								\$8,150,000

- Costs include 25% soft costs for contingencies, design, construction management, bonding and legal fees, testing and surveys.
- Costs do not include removal of hazardous materials.
- Costs do not include 3% escalation per year for construction beginning after 2016.



District-Wide HVAC Systems



Roof Replacements



Masonry Repairs



Window Replacements





Emergency Generators



Media Literacy Center



Security Upgrades



Flexible Classrooms





HS Auditorium Renovation



MS Auditorium Renovation



HS Auditorium Renovation



MS Auditorium Renovation



Jefferson Elementary Addition



Franklin Elementary Addition



Jefferson Elementary Addition



Franklin Elementary Addition



# SUMMIT PUBLIC SCHOOLS

## 5 Year Facility Planning Outlook October 19, 2017

School	Category	Project	Rank	Identified Cost	Status	Remaining Cost
Franklin ES	Sitework	Paving	1	112,000	Completed	0
Franklin ES	Sitework	Sidewalks	1	38,000	Completed	0
Franklin ES	Sitework	Drainage	3	65,000	Open	65,000
Franklin ES	Envelope	Roofing	1	530,000	Completed	0
Franklin ES	Interior	Security Main Entrance	1	65,000	Completed	0
Franklin ES	Electrical	Sight Lighting Upgrades	3	99,000	Open	99,000
Franklin ES	Fire Protection	Addressable Fire Alarm	1	230,000	Completed	0
Jefferson ES	Sitework	Paving	1	175,000	Completed	0
Jefferson ES	Sitework	Sidewalks	1	100,000	Completed	0
Jefferson ES	Sitework	Drainage	1	80,000	Completed	0
Jefferson ES	Envelope	Roofing	1	446,000	Completed	0
Jefferson ES	Interior	Stage Lighting & Sound	2	135,000	Open	135,000
Jefferson ES	Electrical	Sight Lighting Upgrades	2	153,000	Completed	0
Jefferson ES	Fire Protection	Addressable Fire Alarm	2	205,000	Open	205,000
Lincoln ES	Envelope	Roofing	1	270,000	Completed	0
Lincoln ES	Interior	Stage Lighting & Sound	2	135,000	Open	135,000
Lincoln ES	Interior	Security Main Entrance	1	32,000	Completed	0
Lincoln ES	Fire Protection	Addressable Fire Alarm	2	290,000	Open	290,000
Lincoln ES	Electrical	Sight Lighting Upgrades	3	99,000	Open	99,000
Brayton ES	Sitework	Paving	1	360,000	Open	360,000
Brayton ES	Sitework	Sidewalks	1	35,000	Open	35,000
Brayton ES	Sitework	Drainage	2	15,000	Completed	0
Brayton ES	Envelope	Window Systems	2	630,000	Open	630,000
Brayton ES	Envelope	Roofing	1	315,000	Open	315,000
Brayton ES	Interior	Stage Lighting & Sound	1	135,000	Open	135,000
Brayton ES	Interior	Security Main Entrance	1	30,000	Completed	0
Brayton ES	Electrical	Site Lighting Upgrades	1	115,000	Open	115,000
Washington ES	Sitework	Paving	1	420,000	Completed	0
Washington ES	Sitework	Sidewalks	1	230,000	Completed	0
Washington ES	Sitework	Drainage	3	150,000	Open	150,000
Washington ES	Envelope	Window Systems	1	50,000	Open	50,000
Washington ES	Envelope	Roofing	1	465,000	Completed	0
Washington ES	Interior	Security Main Entrance	1	210,000	Completed	0
Washington ES	Interior	Stage Lighting & Sound	2	135,000	Open	135,000
Washington ES	Electrical	Site Lighting Upgrades	3	77,000	Open	77,000
Washington ES	Fire Protection	Addressable Fire Alarm	2	210,000	Open	210,000
LCJ SMS	Sitework	Paving	1	475,000	Open	475,000
LCJ SMS	Sitework	ADA ramp Main Entrance	1	50,000	Open	50,000
LCJ SMS	Sitework	Canopy Main Entrance	1	250,000	Open	250,000
LCJ SMS	Sitework	Drop off-Pick up (Rear)	1	50,000	Open	50,000
LCJ SMS	Sitework	Site Parking Add 50 spaces	1	150,000	Open	150,000
LCJ SMS	Sitework	Running Track	1	85,000	Open	85,000
LCJ SMS	Sitework	Sidewalks	1	25,000	Completed	0
LCJ SMS	Sitework	Loading Dock	1	100,000	Open	100,000
LCJ SMS	Envelope	Masonry repairs	1	1,150,000	Completed	0
LCJ SMS	Envelope	Roofing	1	35,000	Open	35,000
LCJ SMS	Interior	Flooring Tile	1	640,000	Open	300,000
LCJ SMS	Interior	Science Labs	1	960,000	Completed	0
LCJ SMS	Interior	Auditorium	1	2,151,000	Completed	0
LCJ SMS	Educational	Ecolab	1	960,000	Open	960,000
SHS	Sitework	Paving	1	250,000	Open	250,000
SHS	Sitework	Sidewalks	1	100,000	Completed	0
SHS	Sitework	Parking lot Lighting	1	100,000	Open	100,000
SHS	Envelope	Roofing	1	5,000,000	Open	5,000,000
SHS	Interior	Bathrooms	1	20,000	Open	20,000
SHS	Interior	Casework Art/Music	1	100,000	Open	100,000
SHS	Mechanical	Univentilators	1	500,000	Open	500,000
SHS	Mechanical	Controls	1	200,000	Completed	0
SHS	Electrical	Wiring	1	250,000	Open	250,000
SHS	Electrical	Gym Lighting	1	50,000	Open	50,000
SHS	Fire Protection	Addressable Fire Alarm	1	200,000	Open	200,000
SHS	Educational	Library Re-design	2	1,000,000	Open	1,000,000
SHS	Educational	Fitness Center	2	1,000,000	Open	1,000,000
SHS	Educational	Culinary Program Redesign	2	500,000	Open	500,000
SHS	Sitework	Turf Field	2	750,000	Open	750,000
District Wide	Interior	Bathrooms	2	300,000	Open	300,000
				24,242,000		15,715,000

School	Category	Project	Rank	Identified Cost	Status	Remaining Cost
Franklin ES	Sitework	Drainage	3	65,000	Open	65,000
Franklin ES	Electrical	Sight Lighting Upgrades	3	99,000	Open	99,000
Jefferson ES	Interior	Stage Lighting & Sound	2	135,000	Open	135,000
Jefferson ES	Fire Protection	Addressable Fire Alarm	2	205,000	Open	205,000
Lincoln ES	Interior	Stage Lighting & Sound	2	135,000	Open	135,000
Lincoln ES	Fire Protection	Addressable Fire Alarm	2	290,000	Open	290,000
Lincoln ES	Electrical	Sight Lighting Upgrades	3	99,000	Open	99,000
Brayton ES	Sitework	Paving	1	360,000	Open	360,000
Brayton ES	Sitework	Sidewalks	1	35,000	Open	35,000
Brayton ES	Envelope	Window Systems	2	630,000	Open	630,000
Brayton ES	Envelope	Roofing	1	315,000	Open	315,000
Brayton ES	Interior	Stage Lighting & Sound	1	135,000	Open	135,000
Brayton ES	Electrical	Site Lighting Upgrades	1	115,000	Open	115,000
Washington ES	Sitework	Drainage	3	150,000	Open	150,000
Washington ES	Envelope	Window Systems	1	50,000	Open	50,000
Washington ES	Interior	Stage Lighting & Sound	2	135,000	Open	135,000
Washington ES	Electrical	Site Lighting Upgrades	3	77,000	Open	77,000
Washington ES	Fire Protection	Addressable Fire Alarm	2	210,000	Open	210,000
LCJ SMS	Sitework	Paving	1	475,000	Open	475,000
LCJ SMS	Sitework	ADA ramp Main Entrance	1	50,000	Open	50,000
LCJ SMS	Sitework	Canopy Main Entrance	1	250,000	Open	250,000
LCJ SMS	Sitework	Drop off-Pick up (Rear)	1	50,000	Open	50,000
LCJ SMS	Sitework	Site Parking Add 50 spaces	1	150,000	Open	150,000
LCJ SMS	Sitework	Running Track	1	85,000	Open	85,000
LCJ SMS	Sitework	Loading Dock	1	100,000	Open	100,000
LCJ SMS	Envelope	Roofing	1	35,000	Open	35,000
LCJ SMS	Interior	Flooring Tile	1	640,000	Open	300,000
LCJ SMS	Educational	Ecolab	1	960,000	Open	960,000
SHS	Sitework	Paving	1	250,000	Open	250,000
SHS	Sitework	Parking lot Lighting	1	100,000	Open	100,000
SHS	Envelope	Roofing	1	5,000,000	Open	5,000,000
SHS	Interior	Bathrooms	1	20,000	Open	20,000
SHS	Interior	Casework Art/Music	1	100,000	Open	100,000
SHS	Mechanical	Univentilators	1	500,000	Open	500,000
SHS	Electrical	Wiring	1	250,000	Open	250,000
SHS	Electrical	Gym Lighting	1	50,000	Open	50,000
SHS	Fire Protection	Addressable Fire Alarm	1	200,000	Open	200,000
SHS	Educational	Library Re-design	2	1,000,000	Open	1,000,000
SHS	Educational	Fitness Center	2	1,000,000	Open	1,000,000
SHS	Educational	Culinary Program Redesign	2	500,000	Open	500,000
SHS	Sitework	Turf Field	2	750,000	Open	750,000
District Wide	Interior	Bathrooms	2	300,000	Open	300,000



School	Category	Project	Rank	Identified Cost	Status	Remaining Cost
Franklin ES	Sitework	Drainage	3	65,000	Open	65,000
Franklin ES	Electrical	Sight Lighting Upgrades	3	99,000	Open	99,000
Jefferson ES	Interior	Stage Lighting & Sound	2	135,000	Open	135,000
Jefferson ES	Fire Protection	Addressable Fire Alarm	2	205,000	Open	205,000
Lincoln ES	Interior	Stage Lighting & Sound	2	135,000	Open	135,000
Lincoln ES	Fire Protection	Addressable Fire Alarm	2	290,000	Open	290,000
Lincoln ES	Electrical	Sight Lighting Upgrades	3	99,000	Open	99,000
Brayton ES	Sitework	Paving	1	360,000	Open	360,000
Brayton ES	Sitework	Sidewalks	1	35,000	Open	35,000
Brayton ES	Envelope	Window Systems	2	630,000	Open	630,000
Brayton ES	Envelope	Roofing	1	315,000	Open	315,000
Brayton ES	Interior	Stage Lighting & Sound	1	135,000	Open	135,000
Brayton ES	Electrical	Site Lighting Upgrades	1	115,000	Open	115,000
Washington ES	Sitework	Drainage	3	150,000	Open	150,000
Washington ES	Envelope	Window Systems	1	50,000	Open	50,000
Washington ES	Interior	Stage Lighting & Sound	2	135,000	Open	135,000
Washington ES	Electrical	Site Lighting Upgrades	3	77,000	Open	77,000
Washington ES	Fire Protection	Addressable Fire Alarm	2	210,000	Open	210,000
LCJ SMS	Sitework	Paving	1	475,000	Open	475,000
LCJ SMS	Sitework	ADA ramp Main Entrance	1	50,000	Open	50,000
LCJ SMS	Sitework	Canopy Main Entrance	1	250,000	Open	250,000
LCJ SMS	Sitework	Drop off-Pick up (Rear)	1	50,000	Open	50,000
LCJ SMS	Sitework	Site Parking Add 50 spaces	1	150,000	Open	150,000
LCJ SMS	Sitework	Running Track	1	85,000	Open	85,000
LCJ SMS	Sitework	Loading Dock	1	100,000	Open	100,000
LCJ SMS	Envelope	Roofing	1	35,000	Open	35,000
LCJ SMS	Interior	Flooring Tile	1	640,000	Open	300,000
LCJ SMS	Educational	Ecolab	1	960,000	Open	960,000
SHS	Sitework	Paving	1	250,000	Open	250,000
SHS	Sitework	Parking lot Lighting	1	100,000	Open	100,000
SHS	Envelope	Roofing	1	5,000,000	Open	5,000,000
SHS	Interior	Bathrooms	1	20,000	Open	20,000
SHS	Interior	Casework Art/Music	1	100,000	Open	100,000
SHS	Mechanical	Univentilators	1	500,000	Open	500,000
SHS	Electrical	Wiring	1	250,000	Open	250,000
SHS	Electrical	Gym Lighting	1	50,000	Open	50,000
SHS	Fire Protection	Addressable Fire Alarm	1	200,000	Open	200,000
SHS	Educational	Library Re-design	2	1,000,000	Open	1,000,000
SHS	Educational	Fitness Center	2	1,000,000	Open	1,000,000
SHS	Educational	Culinary Program Redesign	2	500,000	Open	500,000
SHS	Sitework	Turf Field	2	750,000	Open	750,000
District Wide	Interior	Bathrooms	2	300,000	Open	300,000

### Summary of Needs:

- Site Work
- **Building Envelope**
- Building Interior
- Mechanical Systems
- Electrical Systems
- Fire Protection Systems
- Educational Adequacy



### G.F.R.C. Fascia and Gutters





### Summary of Needs:

- Site Work
- **Building Envelope**
- Building Interior
- Mechanical Systems
- Electrical Systems
- Fire Protection Systems
- Educational Adequacy



### Roofing





### Summary of Needs:

- Site Work
- **Building Envelope**
- Building Interior
- Mechanical Systems
- Electrical Systems
- Fire Protection Systems
- Educational Adequacy



### Chimney and Masonry Repairs





### Summary of Needs:

- Site Work
- Building Envelope
- Building Interior
- Mechanical Systems
- **Electrical Systems**
- Fire Protection Systems
- Educational Adequacy



### Electrical Wiring



### Summary of Needs:

- Site Work
- Building Envelope
- **Building Interior**
- Mechanical Systems
- Electrical Systems
- Fire Protection Systems
- Educational Adequacy



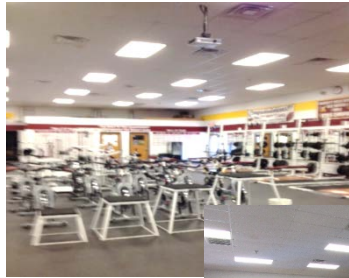
### Toilet Rooms





### Summary of Needs:

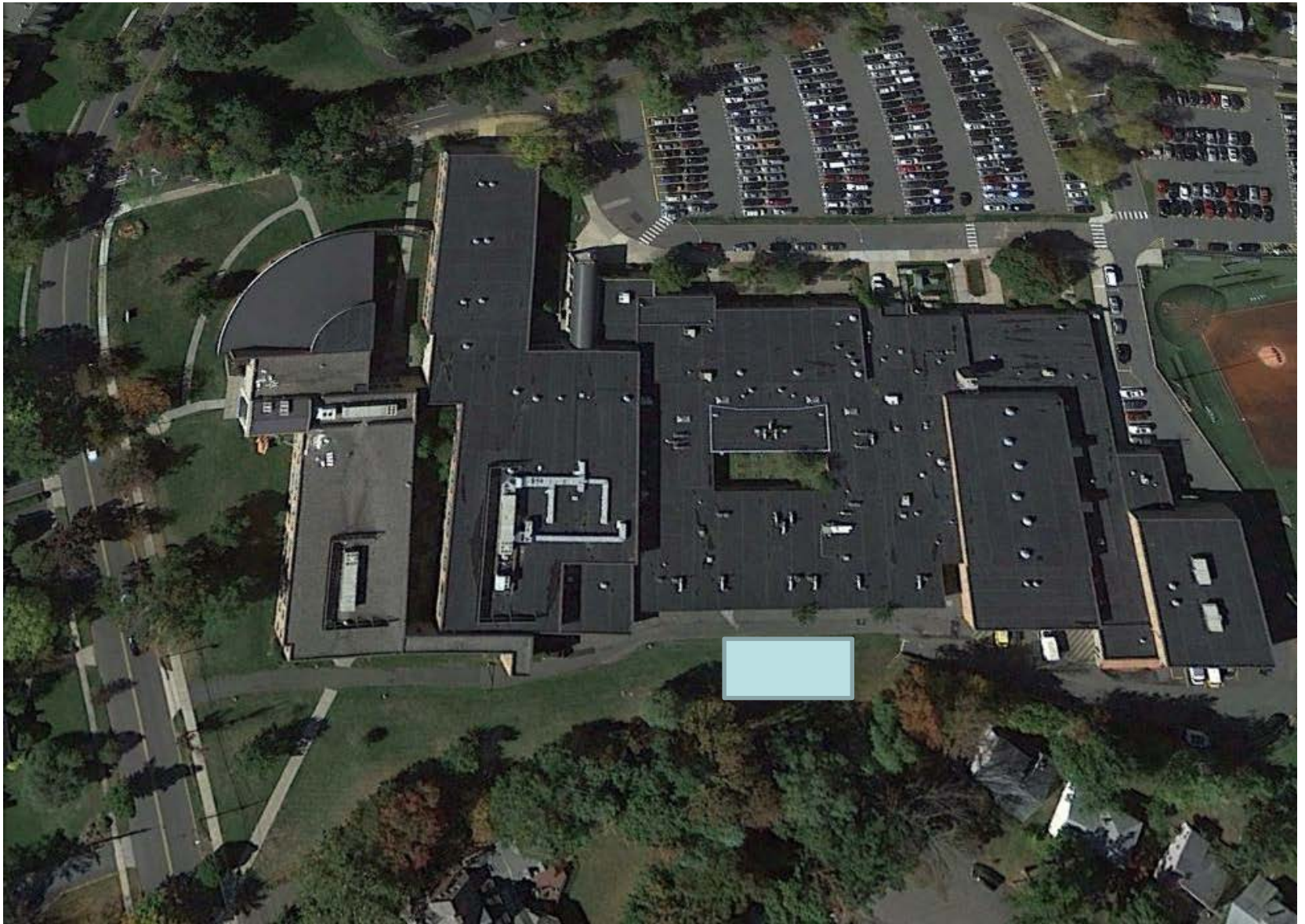
- Site Work
- Building Envelope
- Building Interior
- Mechanical Systems
- Electrical Systems
- Fire Protection Systems
- **Educational Adequacy**



### Inadequate Space for Dance, Cheering, Wrestling and Team Rooms







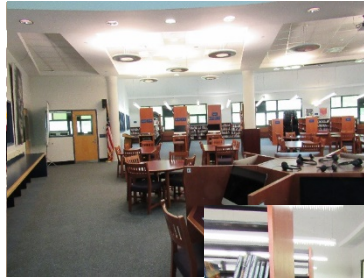
**Fitness Center – Fitness Room and Storage**

**Concept Diagram C**



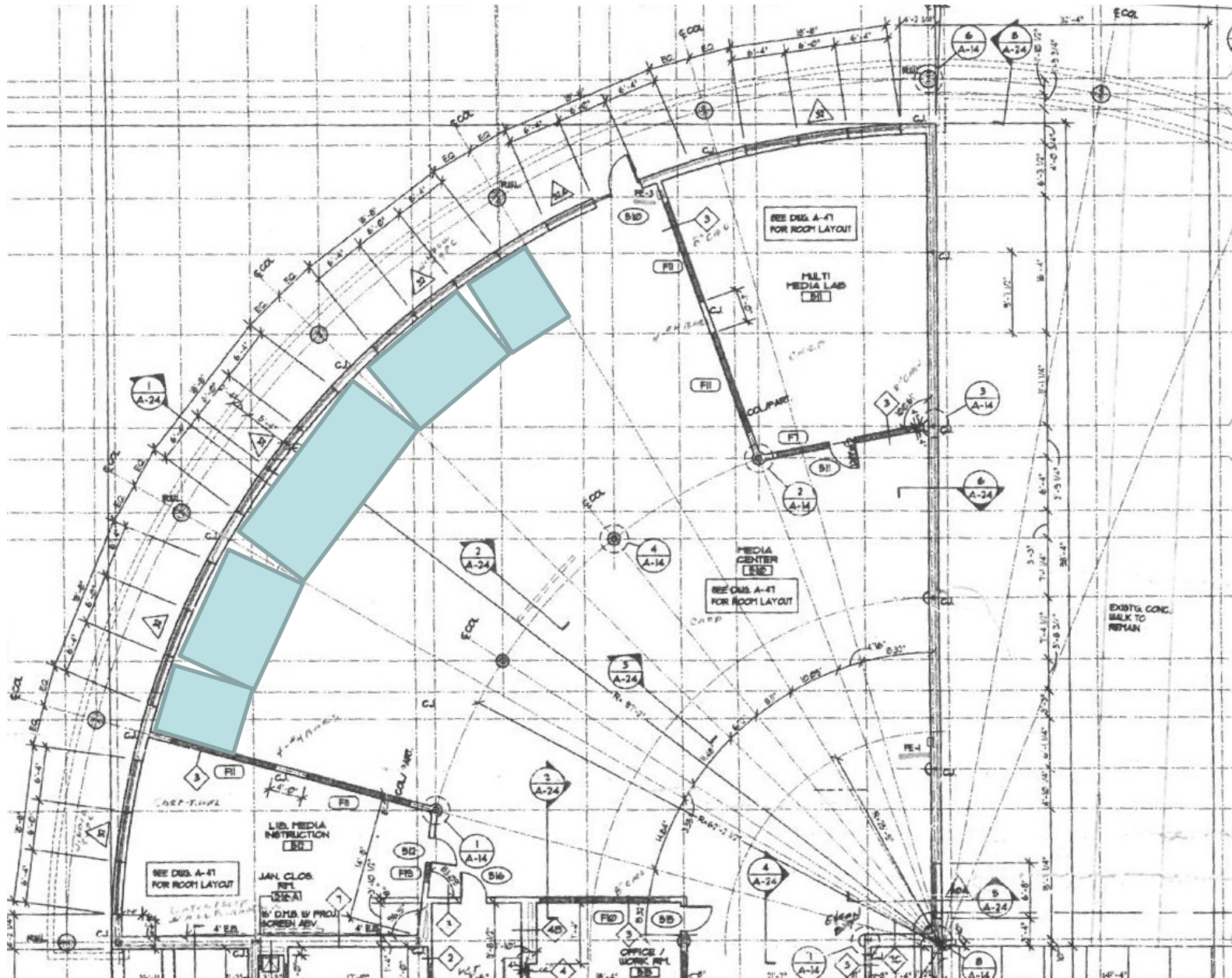
### Summary of Needs:

- Site Work
- Building Envelope
- Building Interior
- Mechanical Systems
- Electrical Systems
- Fire Protection Systems
- **Educational Adequacy**



### Inefficient Use of Library/Media Center







### Summary of Needs:

- Site Work
- Building Envelope
- Building Interior
- Mechanical Systems
- Electrical Systems
- Fire Protection Systems
- **Educational Adequacy**



### Inadequate Storage and Space for Band





### Summary of Needs:

- Site Work
- Building Envelope
- Building Interior
- Mechanical Systems
- Electrical Systems
- Fire Protection Systems
- **Educational Adequacy**



### Inadequate Storage for Theater Arts Program





### Summary of Needs:

- Site Work
- Building Envelope
- Building Interior
- Mechanical Systems
- Electrical Systems
- Fire Protection Systems
- **Educational Adequacy**

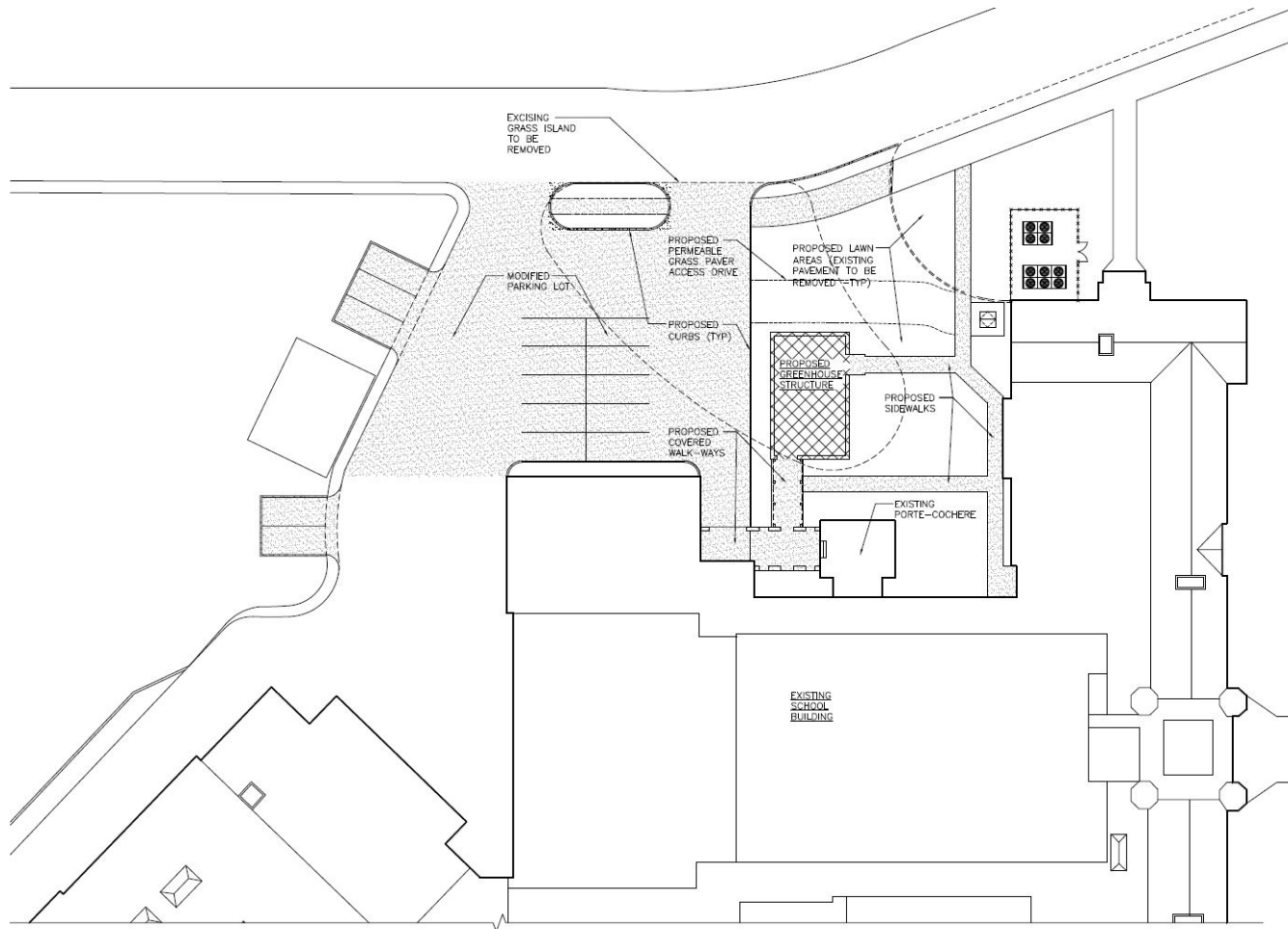


### Aging Art Facilities Need Revitalization





### Middle School Eco Lab



	SUMMER	2018	2019	2020	2021	2022	Total	Notes
<b>Cap Reserve - priority</b>								
Jefferson PC	Playground surface	90,000						
Wilson PC	Playground surface	90,000						
Washington	Window Systems	50,000						
SHS	Turf Field		750,000					
LCJSMS	Running Track		85,000					possible PTO funding
Brayton	Roofing			315,000				
<b>Cap Reserve - priority TOTAL</b>		<b>230,000</b>	<b>835,000</b>	<b>315,000</b>	<b>0</b>	<b>0</b>	<b>1,380,000</b>	
<b>Cap Reserve - phase-in</b>								
Brayton ES	Addressable Fire Alarm	20,000						code upgrade
Jefferson ES	Addressable Fire Alarm		205,000					code upgrade
Lincoln ES	Addressable Fire Alarm			290,000				code upgrade
SHS	Addressable Fire Alarm				200,000			code upgrade
Washington ES	Addressable Fire Alarm					210,000		code upgrade
Brayton ES	Paving			360,000				possible City DPW (Shared Svcs)
LCJ SMS	Paving				475,000			possible City DPW (Shared Svcs)
SHS	Paving					250,000		possible City DPW (Shared Svcs)
Franklin ES	Sight Lighting Upgrades		99,000					will monitor
Lincoln ES	Sight Lighting Upgrades			99,000				will monitor
Brayton ES	Site Lighting Upgrades				115,000			will monitor
Washington ES	Site Lighting Upgrades					77,000		will monitor
<b>Cap Reserve - phase-in TOTAL</b>		<b>20,000</b>	<b>304,000</b>	<b>749,000</b>	<b>790,000</b>	<b>537,000</b>	<b>2,400,000</b>	
<b>CAP RESERVE TOTAL</b>		<b>250,000</b>	<b>1,139,000</b>	<b>1,064,000</b>	<b>790,000</b>	<b>537,000</b>	<b>3,780,000</b>	
<b>Note: Current capital reserve ~\$2M....future year deposits will aid in covering phase-in items</b>								
<b>Bond</b>								
SHS	Roof				5,000,000		<b>5,000,000</b>	

SHS	Educational	Culinary Program Redesign	307	500,000	Doing it	summer '18	Food Service Fund 61
Jefferson PC	Playground		301	90,000	necessity	summer '18	Cap Reserve
Wilson PC	Playground		301	90,000	necessity	summer '18	Cap Reserve
Washington ES	Envelope	Window Systems	169	50,000	necessity	summer '18	Cap Reserve
SHS	Sitework	Turf Field	289	750,000	necessity	summer '19	Cap Reserve
LCJ SMS	Sitework	Running Track (for phys ed)	16	85,000	necessity	summer '19	Cap Reserve? PTO
Brayton ES	Envelope	Roofing	233	315,000	necessity	summer '20	Cap Reserve
Brayton ES	Envelope	Window Systems	169	630,000	necessity	summer '21	Cap Reserve
<b>Cap Reserve phase-in</b>							
Brayton ES	Fire Protection	Addressable Fire Alarm	158	200,000	code upgrade	phase in	Cap Reserve
Jefferson ES	Fire Protection	Addressable Fire Alarm	158	205,000	code upgrade	phase in	Cap Reserve
Lincoln ES	Fire Protection	Addressable Fire Alarm	158	290,000	code upgrade	phase in	Cap Reserve
SHS	Fire Protection	Addressable Fire Alarm	158	200,000	code upgrade	phase in	Cap Reserve
Washington ES	Fire Protection	Addressable Fire Alarm	158	210,000	code upgrade	phase in	Cap Reserve
Brayton ES	Sitework	Paving	124	360,000	will monitor	phase in	Cap Reserve
LCJ SMS	Sitework	Paving	124	475,000	will monitor	phase in	Cap Reserve
SHS	Sitework	Paving	124	250,000	will monitor	phase in	Cap Reserve
Franklin ES	Electrical	Sight Lighting Upgrades	124	99,000	will monitor	phase in	Cap Reserve
Lincoln ES	Electrical	Sight Lighting Upgrades	124	99,000	will monitor	phase in	Cap Reserve
Brayton ES	Electrical	Site Lighting Upgrades	124	115,000	will monitor	phase in	Cap Reserve
Washington ES	Electrical	Site Lighting Upgrades	124	77,000	will monitor	phase in	Cap Reserve
<b>Bond</b>							
SHS	Envelope	Roofing	233	5,000,000	necessity	summer '21	bond
<b>Maintenance</b>							
LCJ SMS	Envelope	Roofing	233	35,000	necessity		maintenance
LCJ SMS	Interior	Flooring Tile (orig 640K)	200	300,000			maintenance
SHS	Electrical	Wiring	164	250,000	as we go		maintenance
Brayton ES	Interior	Stage Lighting & Sound	73	135,000	nice to have	1 per yrlmaint	Fund 12/SPARC/PTO
Jefferson ES	Interior	Stage Lighting & Sound	73	135,000	nice to have	1 per yrlmaint	Fund 12/SPARC/PTO
Lincoln ES	Interior	Stage Lighting & Sound	73	135,000	nice to have	1 per yrlmaint	Fund 12/SPARC/PTO
Washington ES	Interior	Stage Lighting & Sound	73	135,000	nice to have	1 per yrlmaint	Fund 12/SPARC/PTO
District Wide	Interior	Bathrooms	?	300,000	fixtures/stalls		maintenance



## **Planning Timeline for 2018 Summer Projects:**

**November 2017 - Schematic Design and NJDOE Submittals**

**December 2017 - Detailed Design Phase**

**March 2018 - Bidding Phase**

**April 2018 - Award of Contracts for Construction**

**June 2018 - Construction Begins**

**August 2018 - Construction Ends**

**Thank You!**